



**GEARHEADS** Frame size 90mm sq. (3.54 in. sq.)

BALL BEARING TYPE

**RATED TORQUE OF GEARHEAD**

MODEL	Speed(rpm)	500	300	200	120	100	60	50	30	20	15	10	9	6	5	3	2	1	
	Ratio	50Hz	3	5	7.5	12.5	15	25	30	50	75	100	150	166.7	250	300	500	750	1500
		60Hz	3.6	6	9	15	18	30	36	60	90	120	180	200	300	360	600	900	1800
<b>L9VK□B</b>	kg-cm	10.9	18.2	27.3	41.1	49.3	74.3	89.1	148.5	199.1	200	200	200	200	200	200	200	200	
<b>L9WK□B</b>	N-m	1.07	1.79	2.68	4.02	4.83	7.28	8.73	14.55	19.51	19.60	19.60	19.60	19.60	19.60	19.60	19.60		
<b>L9V10D(DECIMAL)</b>	oz-in	152	253	380	570	684	1031	1237	2062	2765	2777	2777	2777	2777	2777	2777	2777		

With Decimal Gearhead

- \* The normal torque is that the motor and gearhead are directly coupled.
- \* Insert the denominator of reduction ratio in □ of gearhead model name.
- \* Actual rotation speed is 2~15% less than synchronous speed.
- \* ■Color indicates that the rotation of gearhead shaft is in opposite direction as output shaft of motor.

BRAKE MOTORS

**DIMENSIONS**

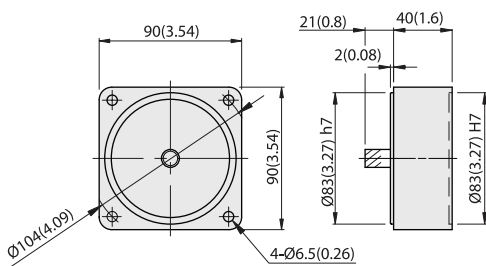
Unit : mm(inch)

**DECIMAL GEARHEAD**

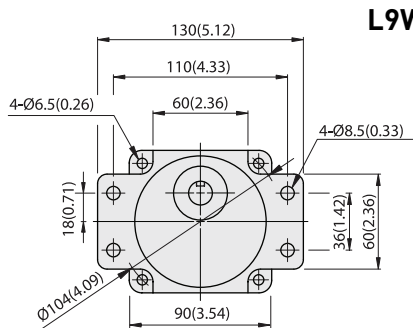
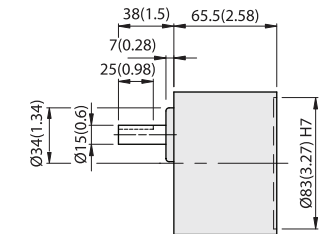
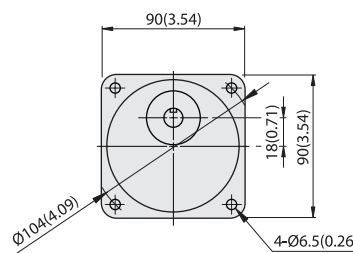
**GEARHEAD**

**L9V10D**

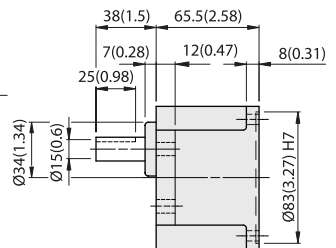
**L9VK□B**



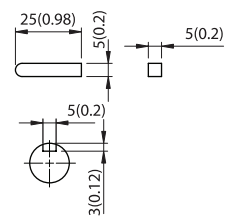
WEIGHT 0.6kg (1.3 lb)



**L9WK□B**

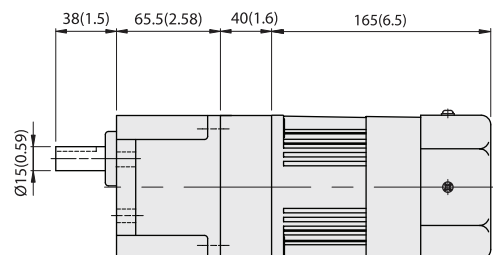
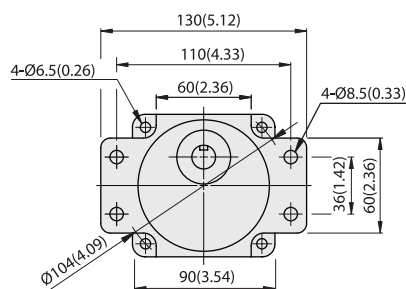


MODEL	GEAR RATIO	WEIGHT		BOLT
		kg	lb	
L9VK□B	1/3~1/200	1.5	3.3	M6x95
L9WK□B	1/3~1/200	1.6	3.5	M6xL25



KEY SIZE

**L9WK□B + L9V10D + L9R60P□HE**





## GEARHEADS (ULTRA POWERFUL TYPE) Frame size 90mm sq. (3.54 in. sq.)

BALL BEARING TYPE

### ▶ RATED TORQUE OF GEARHEAD

MODEL	Speed(rpm)	500	300	200	120	100	60	50	30	20	15	10	9	6	5	3	2	1
	Ratio	50Hz	3	5	7.5	12.5	15	25	30	50	75	100	150	166.7	250	300	500	750
	60Hz	3.6	6	9	15	18	30	36	60	90	120	180	200	300	360	600	900	1800

L9UK□B L9V10D(DECIMAL)	kg-cm	10.9	18.2	27.3	41.1	49.3	74.3	89.1	148.5	199.1	265.5	300	300	300	300	300	300	300
	N-m	1.07	1.79	2.68	4.02	4.83	7.28	8.73	14.55	19.51	26.02	29.40	29.40	29.40	29.40	29.40	29.40	29.40
	oz-in	152	253	380	570	684	1031	1237	2062	2765	3687	4166	4166	4166	4166	4166	4166	4166

With Decimal Gearhead

- \* The normal torque is that the motor and gearhead are directly coupled.
- \* Insert the denominator of reduction ratio in □ of gearhead model name.
- \* Actual rotation speed is 2~15% less than synchronous speed.
- \* ■ Color indicates that the rotation of gearhead shaft is in opposite direction as output shaft of motor.

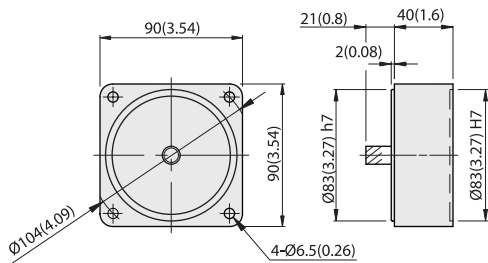
BRAKE MOTORS

### DIMENSIONS

Unit : mm(inch)

#### DECIMAL GEARHEAD

##### L9V10D

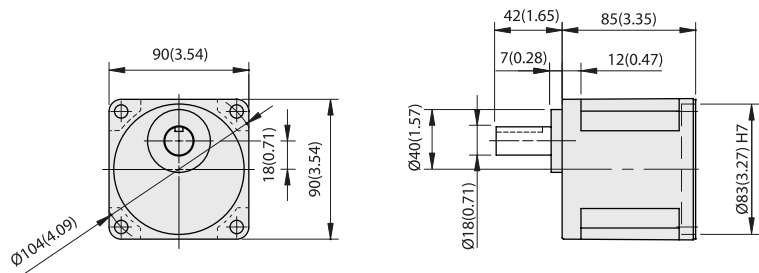


WEIGHT 0.6kg (1.3 lb)

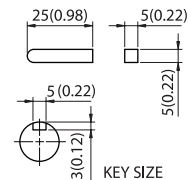


#### GEARHEAD

##### L9UK□B



MODEL	GEAR RATIO	WEIGHT		BOLT
		kg	lb	
L9UK□B	1/3~1/200	1.95	4.3	M6xL20



KEY SIZE



##### L9UK□B + L9R60P□HE

